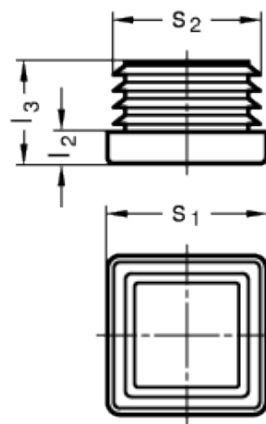
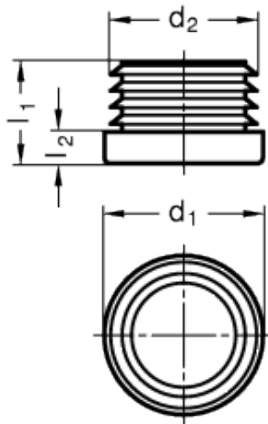


GN 991

Closing plugs



technical informations

Material

Polythylen based (PE) technopolymer.

Colour

Black, matte finish.

Features and applications

Tube end plugs GN 991 have been designed for sealing tube ends for safety or optical reasons. They are inserted into the tube end either by hand or with a mallet.

Accessories

- Construction tubings GN 990.
- Insert bushes GN 992.

Standard Elements	Main dimensions										for tube GN 990	Weigh g
	Description	d ₁	s ₁	d ₂	s ₂	w ₁	w ₂	l ₁	l ₂	l ₃		
GN 991-D10	D 10	-	6 ... 8	-	1 ... 2	-	10	4	-	-	D 10	1
GN 991-D12	D 12	-	8 ... 10	-	1 ... 2	-	14	4	-	-	D 12	1
GN 991-D14	D 14	-	10 ... 12	-	1 ... 2	-	14	4	-	-	D 14	1
GN 991-D15	D 15	-	11 ... 13	-	1 ... 2	-	16	4.5	-	-	D 15	1
GN 991-D16	D 16	-	12 ... 13.6	-	1.2 ... 2	-	15	5	-	-	D 16	1
GN 991-D18	D 18	-	13 ... 16	-	1 ... 2.5	-	16	5	-	-	D 18	2
GN 991-D20	D 20	-	15 ... 18	-	1 ... 2.5	-	17	5	-	-	D 20	2
GN 991-D25	D 25	-	20 ... 23	-	1 ... 2.5	-	18	5	-	-	D 25	3
GN 991-D30	D 30	-	25 ... 28	-	1 ... 2.5	-	17	5	-	-	D 30	3
GN 991-D32	D 32	-	27 ... 30	-	1 ... 2.5	-	16	5	-	-	D 32	4
GN 991-D35	D 35	-	30 ... 33	-	1 ... 2.5	-	17	5	-	-	D 35	5
GN 991-D40	D 40	-	30 ... 34	-	3 ... 5	-	17	5	-	-	D 40	6
GN 991-D42	D 42	-	35 ... 37	-	2.5 ... 3.5	-	17	5	-	-	D 42	6
GN 991-D45	D 45	-	38 ... 43	-	1 ... 3.5	-	17	5	-	-	D 45	7
GN 991-D48	D 48	-	40 ... 42	-	3 ... 4	-	20	5	-	-	D 48	9
GN 991-D50	D 50	-	43 ... 46	-	2.5 ... 3.5	-	23	6	-	-	D 50	11
GN 991-D55	D 55	-	45 ... 49	-	3 ... 5	-	20	5	-	-	D 55	11
GN 991-D60	D 60	-	52 ... 54	-	3 ... 4	-	21	4	-	-	D 60	15
GN 991-V10	-	V 10	-	5 ... 8	-	1 ... 2.5	-	-	14	4	V 10	1
GN 991-V12	-	V 12	-	8 ... 10	-	1 ... 2	-	-	16	5	V 12	1
GN 991-V16	-	V 16	-	12 ... 13	-	1.5 ... 2	-	-	17	5	V 16	2
GN 991-V20	-	V 20	-	15 ... 18	-	1 ... 2.5	-	-	17	5	V 20	2
GN 991-V25	-	V 25	-	20 ... 23	-	1 ... 2.5	-	-	17	5	V 25	4
GN 991-V30	-	V 30	-	25 ... 28	-	1 ... 2.5	-	-	17	5	V 30	5
GN 991-V35	-	V 35	-	30 ... 33	-	1 ... 2.5	-	-	20	5	V 35	7
GN 991-V40	-	V 40	-	34 ... 36	-	2 ... 3	-	-	19	5	V 40	9
GN 991-V45	-	V 45	-	39 ... 43	-	1 ... 3	-	-	20	5	V 45	10
GN 991-V50	-	V 50	-	40 ... 45	-	2.5 ... 5	-	-	25	5	V 50	15



STANDARD MACHINE ELEMENTS WORLDWIDE